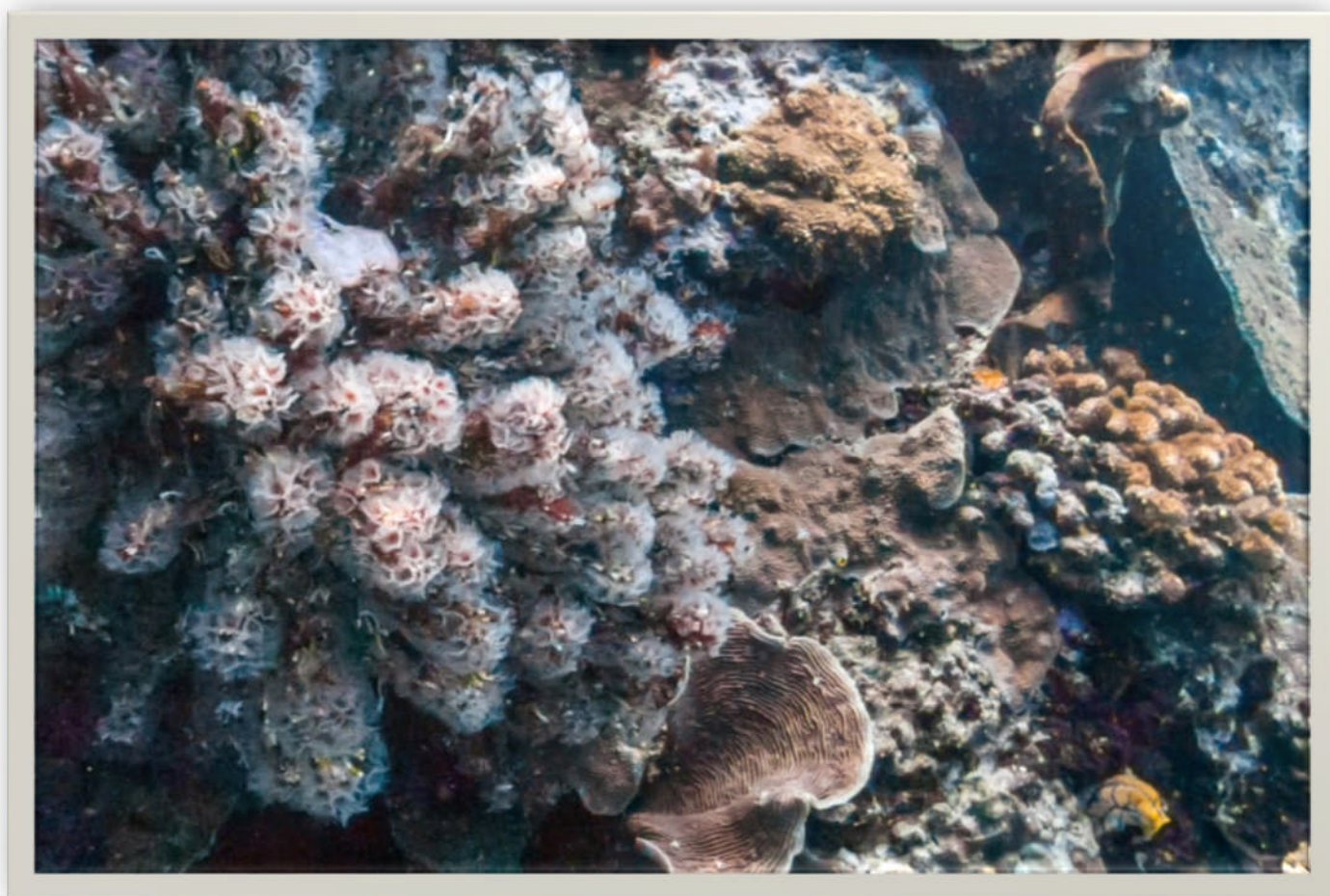


Underwater Explorers Club of SA Inc

NEWSLETTER

NOVEMBER-2019





GENERAL MEETING

Wednesday – 6th
November

1945 for 2000



Nailsworth Community Club, 31 Derlanger Avenue, Collinswood
All members, past members and potential members are invited to attend.

At the end of July, a group of our members undertook a diving trip to Lady Elliot Island. It is at the southern end of the Great Barrier Reef, about 80 km North East of Bundaberg. A very small island (could be enclosed in a square of side 750m), it has many attractions.

*Our guest presenter, **Ken Smith** has the topic —
Diving with Mantas on Lady Elliot Island*

*Deferred judging of the “Big Uns” theme from the photo competition
will be conducted as part of the proceedings of this meeting*

Prior to the meeting, you are invited to join with those members
enjoying a meal at the Hampstead Hotel on North East Road, Collinswood.
Meet there at 1815.

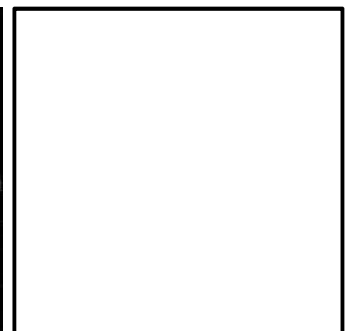
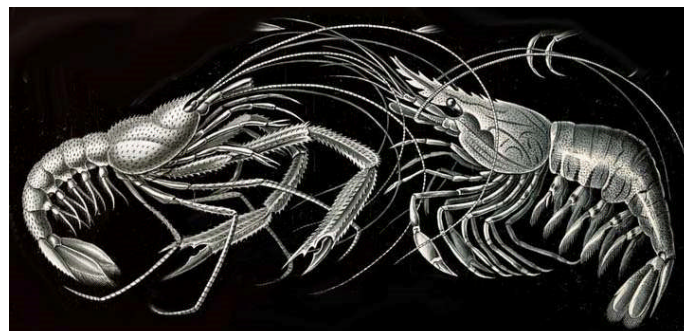
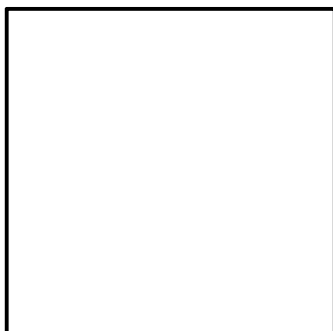
COMMITTEE 2019-2020

Treasurer..... Robyn BUTTERFIELD
Secretary..... Keith LOCKWOOD
Safety Officer Sue CUCCHIARELLI
Committee Person..... Mary HOOD
Committee Person..... Hugh SPARROW
Newsletter Editor..... Peter MANSFIELD

CONTACTS 2019-2020

Email..... secretary@uecofsa.org.au
Website..... www.uecofsa.org.au
Postal Address..... Underwater Explorers Club of SA Inc
P.O. Box 74
Kent Town SA 5071

DISCLAIMER - The opinions expressed by authors of material in this newsletter are not necessarily those of the UEC





Waters to be Explored



NOVEMBER

Sun 3rd

Glenelg Barge / Dredge

Tide times — [L] 0045 **0.42** [H] 0725 **2.23** [L] 1356 **0.53**

These were both sunk as artificial reefs, and lie in 22M. There is ease of entry and exit as one can anchor right over the sites. The Barge has plenty of bullseyes inside and cuttlefish under the hull. Bring a torch to peer into the hatches. Spot the crazy characters left by divers! At the Dredge, you can swim round the hull to see the cuttlefish. Masses of fish collect at the stern. Look for talma or flathead on the bottom. Ascend the "dredge" at the bow to the deck through the bullseyes. Nudibranchs hide on the sides and strongies on the deck. There is a cabin to explore on deck. Bring your camera and remember your safety stop.

Sun 10th

Second Valley

Tide times — [H] 0443 **1.39** [L] 1056 **0.41** [H] 1702 **1.23**

An easy entry at the jetty and dive or snorkel to the point will put you in 9M. Wrasse hide in the brown algae and blue devils in overhangs. Scaly fin protect their lairs. Leafy seadragons have been spotted here too. Follow the point around and return the same way. Stay away from the surge at the surface. Or another entry is possible via the second bay and swim further south to the small caves; be wary of the rocky entry and exit here. Also be aware of the fishermen on the jetty. Another option is to swim out to the interesting bommie, Lassiter's Reef. Good idea to use a compass here. On return, you'll see plenty of anemones clinging to the rocks under the jetty

Thu 21st > Thu 28th

Kangaroo Island

There are plenty of sites here with shallow depths and common species are plentiful: Moonlighters, Silver Drummer, Blue-Throat Wrasse, Sweep, Dusky Morwong, crabs, and many varieties of starfish. Many sites are around Penneshaw including shore dives to Christmas Cove(5M) with abalone and razorfish; Penneshaw Breakwater(6M) has small crays and you may even spot a Groper ! Boat dives include Kangaroo Head(10M) with Hulafish, Zebrafish, and Blue Devils; Connolly's(5M) with abalone, sea urchins, whiting, and seastars; West Kangaroo Head(10M) also with seastars and wrasse; and Penneshaw Lookout(8M) with Herring Cale, and look for interesting creatures hiding in the brown algae. The special treat is the Kingscote jetty(7M) with its' colourful pylons, scallops, and Leafy Sea Dragons. There is certainly something to please all divers. Bring your camera!

Tide times — Kingscote (Penneshaw +61min)

THU 21 Nov	FRI 22 Nov	SAT 23 Nov	SUN 24 Nov
8:44 am 1.38m	4:08 am 1.14m	3:39 am 1.29m	3:50 am 1.47m
6:36 pm 0.81m	6:47 am 1.1m	9:31 am 0.87m	10:09 am 0.65m
	2:04 pm 1.18m	3:35 pm 1.25m	4:20 pm 1.3m
	8:09 pm 0.79m	9:01 pm 0.76m	9:31 pm 0.76m
MON 25 Nov	TUE 26 Nov	WED 27 Nov	THU 28 Nov
4:07 am 1.64m	4:24 am 1.78m	4:39 am 1.89m	4:55 am 1.96m
10:40 am 0.49m	11:08 am 0.4m	11:35 am 0.39m	12:01 pm 0.42m
4:53 pm 1.29m	5:17 pm 1.24m	5:34 pm 1.19m	5:45 pm 1.15m
9:57 pm 0.76m	10:18 pm 0.77m	10:36 pm 0.78m	10:54 pm 0.77m

► *Safety Officer*

SAFE DIVING WITH COMPUTERS

Divers dive with computers. Some of us remember the days when we did not dive with a computer. What would we do without them! We rely on them to keep us safe, *to monitor depth and time* so we don't stay down at too great a depth for too long. We rely on them to monitor our *ascent rate* and *safety stop*. Unfortunately, we sometimes take them for granted.

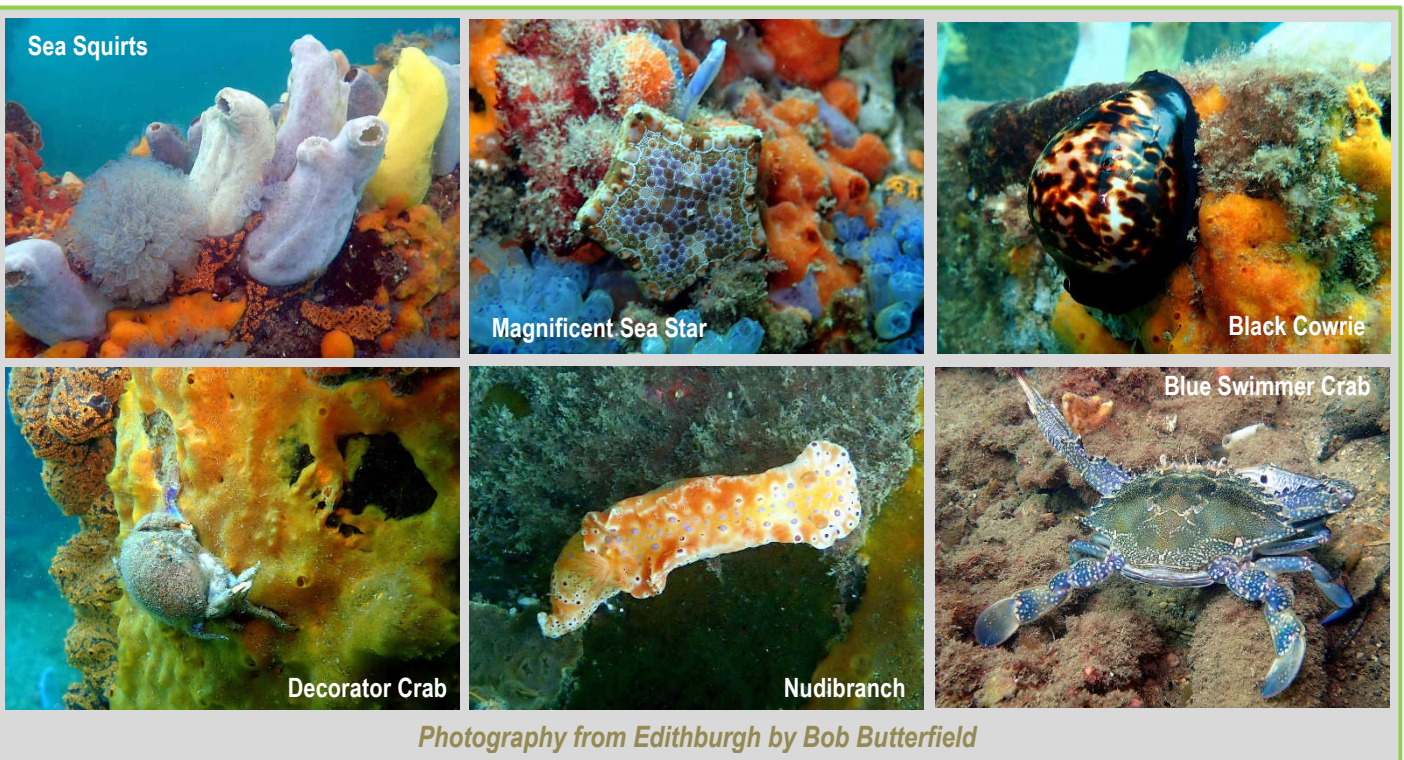
Know your computer but..... *do not forget basic diving principles.*

- Do check that your *computer is working* before your dive
- *Always plan your dive with your buddy* rather than letting your computer run your dive
- *Do the deepest dive first.* And go to your *maximum depth at the start of the dive* and then work progressively to a shallower depth
- Do not dive to the ultimate limits of the computer
- *Reduce your limits* if doing *multiple dives* in a day or *multiple days* of diving. Try to have a break of 24 hours after 3 days
- Do not begin to use a computer if you have dived in the previous 24 hours without one
- Do not 'borrow' someone else's computer
- *Have a back-up plan in the event of computer failure.* Use tables. Do you carry them with you? Do you remember how to use them? Do you wear a watch?
- In the event of *computer failure*, abort the dive. Buddy too! You should not continue the dive using one computer. And the same applies if using a bottom timer.
- In the event of computer failure, *remember basic precautions:* slow ascent, safety stop, etc. And do monitor your air!
- Many computers have a function where divers can build in a safety margin. However, a computer does not monitor an individual's personal predisposition to Decompression Illness!



Safe Diving

Sue



► *Past Dives*

Edithburgh Jetty October 6

Five UEC divers and support crew arrived early morning at Edithburgh. The sea was fairly calm and the water looked clear. Entry was easy as the tide was fairly high.

I dived with Jeanette and Mary, and Bob and Michael were the other buddy pair. Robyn was our helpful look-out.

Immediately, on descending we knew this would be a good dive; the viz was 10-12M. There were orange nudibranchs and colourful pink and orange sponges, ascidians, and sea squirts on the pylons, and it didn't take long to spot our first cowrie. During the dive we saw another dozen, some in pairs. We saw a small seahorse on the brown algae and a decorator crab too.

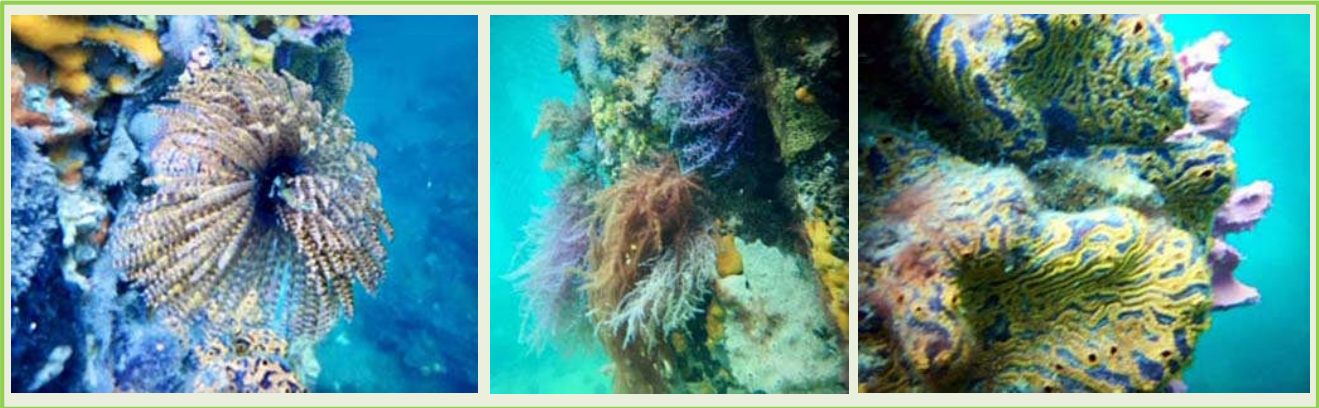
There were lots of biscuit stars, patriella, orange sea stars, and red velvet stars. Further along the jetty we saw a shy pyjama squid on the sand under some sea grass. It loved to be photographed and wasn't going anywhere soon. There was the odd moonlighter and two cowfish out near the end of the jetty but we saw a large school of small drummer swimming back and forth through the pylons on our return. Throughout the dive, we saw plenty of the very large side-gilled slugs, some in groups of three. The jetty pylons are a marvel with so much colour, bright orange hard coral and bright pink, purple, and white algae right into the shallows.

It was a great dive and we were able to enjoy it for 70 minutes. The water is warming up so we look forward to a good summer of diving.

That evening we enjoyed a meal at the Troubridge Hotel and some divers decided to do a night dive.



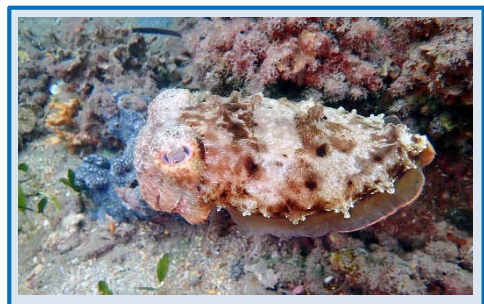
Sous Marin



Night Dive —

Following a pub meal, Mary and I took the opportunity to do a night dive under the jetty.

We had dived earlier in the day, however, many critters are much more visible (and colourful) at night. The dive was relatively short at only 41 minutes and was to a maximum depth of 4 metres. The water temperature was 16 degrees Celcius (much better than the 13 degrees it was a month previous).



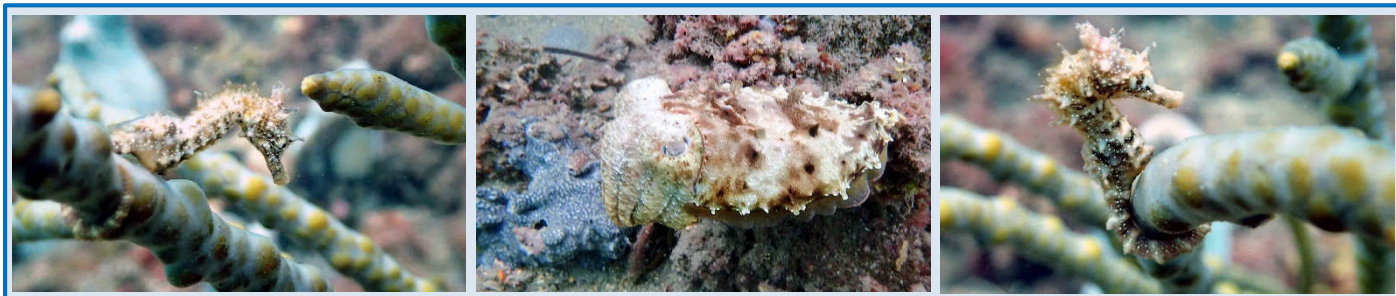
Edithburgh night dives never disappoint. The colours of the sponges and growth on the pylons were vibrant and many types of different crabs were busily scuttling about (blue crabs, sand crabs, decorator crabs). There is a large octopus that lives at the end of the jetty, however, we did not see it on this dive. It still lives there though and has a liking for crabs which was evident by the many crab shells in this particular location.

Mary saw a pyjama squid. Surprisingly I did not spot any seahorses (I did see one in the previous dive on some bubble weed to the right side of the jetty though). Other fish that we spotted included gobies, moonlighters, old wives, dusty morwongs, goat fish, Western Talmas and a small red octopus, cuttlefish and baby squids.

I did not have my camera as it had flooded on the previous dive, which was unusual as all compartments were properly closed. I did not use the housing as it was less than 15 metres. My takeaway from this is – From now on I will always use the housing regardless of the depth. The good news is that the SD card and battery were okay.

When we exited, Bob and Gary were waiting for us on the jetty. Overall, it was a very pleasant dive.

Jeanette



Report photographs submitted by Sue Cuchiarelli and Jeanette Smith

PHOTOGRAPHIC COMPETITION

Display your skills and submit 3 photographs for consideration in our on-going competition which runs tri-monthly

New themes have been decided for future competitions –

The current theme is * **Stripes**
and will be followed by * **Faces**

Photographs should be 7" x 5" which is **2100 x 1500** pixels when resolution is **300** pixels/in

File should be **jpeg**, with a size less than **400** Kb

Forward to secretary@uecofsa.org.au
by **15-November-2019**



Seafood Sensation —

Tuna Melt

INGREDIENTS

- 1/3 c. mayonnaise
- Juice of 1/2 lemon
- 1/2 tsp. crushed red pepper flakes (optional)
- 2 (6-oz.) cans tuna
- 1 ribs celery, finely chopped
- 2 dill pickles, finely chopped
- 1/4 c. finely chopped red onion
- 2 tbsp. freshly chopped parsley
- Salt
- Freshly ground black pepper
- 8 slices bread, such as sourdough
- 2 tbsp. butter
- 1 tomato, sliced
- 8 slices cheddar

INSTRUCTIONS

- Preheat oven to 400°. In a large bowl, whisk together mayonnaise, lemon juice, and red pepper flakes (if using).
- Drain tuna then add to mayonnaise mixture. Use a fork to break up tuna into flakes. Add celery, pickles, red onion, and parsley and toss to combine. Season with salt and pepper.
- Butter one side of each bread slice. Top an unbuttered side with approximately 1/2 cup of tuna salad, 2 to 3 slices tomato, and 2 slices of cheese. Top with another slice of bread, buttered side facing up. Repeat with remaining ingredients and place on a large baking sheet. Bake until cheese is melty, 5 to 8 minutes.

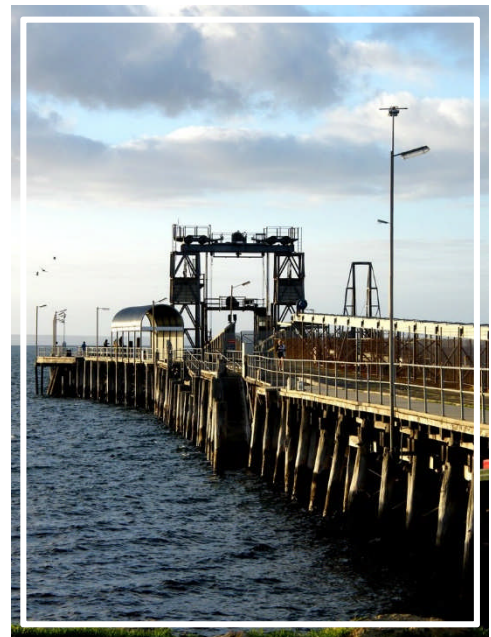
HISTORY OF THE KINGSCOTE JETTY

The Kingscote area, at Reeves Point, was the site for the first jetties in South Australia when the South Australian Company established the first official settlement in South Australia in 1836.

The first jetty was built in 1886 on Beare Point. It was of a screwpile construction 87.5 metres long with a depth of three metres at low tide. Over the years it was upgraded to support the fishing industry and it remained until another jetty was built in 1910 a bit further south. This second jetty was 147 metres long with a depth of 3.5 metres. Upgrading took place in 1950's to widen and lengthen it to handle heavy traffic. Previously, cargo was moved by trucks hauled by horses and now could be towed by tray top trailers. Motor transport was also now possible. Changes were made to include roll-on roll-off ships, the Troubridge and Island Seaway. At this time the jetty grew to 302 metres.

In 1956, a new timber fisherman's jetty, 78 metres long, was built north of the other two jetties. And then another jetty of steel construction, 32 metres long, was built in 1970 between the screwpile and fisherman's jetties. It is also used by fishermen.

Kingscote is the largest town on Kangaroo Island and the main commercial centre. With four jetties, the Kingscote area is well-serviced for the tourism and fishing industries. Divers have also found it to be a worthwhile site. There is plenty of birdlife here too with black swans, pelicans and penguins found near the jetties and on the foreshore.





CALENDAR



📅 All Sunday dives to be booked **on the Website**
by the **Thursday** before the dive **📅**

(Dive **departure** times as shown)

NOVEMBER

DL – Robyn Butterfield (0419 866 460)

SO – Bob Butterfield (0417 838 387)

📅	Sun 3rd	Glenelg Barge / Dredge	<i>Adelaide Shores</i>	0830
ä	Wed 6th	General Meeting — Nailsworth CC, 31 Delanger Ave. Collinswood		2000
📅	Sun 10th	Second Valley		1000
ä	Tue 12th	Committee Meeting		1930
📅	Thu 21st > Thu 28th	Away Kangaroo Island		
ä	Fri 22nd	Newsletter items due		

DECEMBER

DL – Gary Doubleday (0417 886 942)

SO – Sue Cucchiarelli (0438 882 509)

ä	Wed 4th	General Meeting — Nailsworth CC, 31 Delanger Ave. Collinswood	2000	BBQ
📅	Fri 6th > Sun 8th	Fleurieu Peninsula - Hobart		
📅	Sun 15th	Rapid Bay Jetty	0830	

JANUARY

DL – Keith Lockwood (0466 399 360)

SO – Mary Hood (0427 716 938)

ä	Wed 8th	Beach Picnic	Semaphore	1800
📅	Sun 12th	Seacliff Reef	<i>Adelaide Shores</i>	0830
ä	Tue 14th	Committee Meeting		1930
📅	Sun 19th	Noarlunga Reef	<i>O'Sullivan Beach</i>	0830
ä	Fri 24th	Newsletter items due		
📅	Fri 24th > Tue 28th	LWE Limestone Coast		

ITEMS FOR THE NEWSLETTER ARE ALWAYS WELCOME

Send them **by the date shown** in the calendar to —

Peter Mansfield, 4 Delange Avenue, Banksia Park SA 5091 or email to petermsf1@bigpond.com

