

Underwater Explorers Club of SA Inc

NEWSLETTER

FEBRUARY-2019





RELOCATED MEETING

Wednesday – 6th

February

1930



Police Underwater Recovery Unit

82 Esplanade, Semaphore

All members, past members and potential members are invited to attend.

Arrangements have been put in place for Members of the UEC to visit and observe the set up at The SA Police Underwater Recovery Unit.

Activities of the Unit will be outlined, and equipment used displayed.

(The unit is located at the corner of the Esplanade and Swan Street)

Some members will be having a meal at the **Semaphore Palais** Hotel on the Esplanade

The Palais is just along the road from the Police Unit, and the bistro will open at 5:30 pm

If you would to attend, please advise the club by booking on the website before Wednesday morning

COMMITTEE 2018-2019

Treasurer..... Robyn BUTTERFIELD

Secretary..... Keith LOCKWOOD

Safety Officer Sue CUCCHIARELLI

Committee Person..... Mary HOOD

Committee Person..... Ian LOUTH

Newsletter Editor..... Peter MANSFIELD

CONTACTS 2018-2019

SDF Representative..... Judy HANI

Email..... secretary@uecofsa.org.au

Website..... www.uecofsa.org.au

Postal Address..... Underwater Explorers Club of SA Inc

P.O. Box 74

Kent Town SA 5071

DISCLAIMER - The opinions expressed by authors of material in this newsletter are not necessarily those of the UEC



Waters to be Explored



FEBRUARY

Fri 15 > Sun 17

Normanville-Hobart

Tide times — Wirrina Cove

FRI 15 Feb	SAT 16 Feb	SUN 17 Feb
1:55 pm 1.03m	2:15 am 1.75m	4:33 am 2.04m
	11:16 am 0.7m	11:44 am 0.37m
	6:27 pm 1.52m	6:21 pm 1.73m
	10:20 pm 1.29m	11:15 pm 1.03m

There are various dive sites near Normanville. Divers dive on the jetty at Rapid Bay (11M) to see leafy seadragons. Bring a trolley. The jetty at Second Valley (9M) with a swim around the point provides plenty of sea life, blue devils, herring kale, and interesting anemones. Be mindful of any current at the point. It's possible to snorkel out to Lassiter's Reef at Second valley, a bommie about 200M from shore. A boat dive could be to the ex-HMAS Hobart (30M). Special care with dive planning here and you need a permit to dive. Another boat option is a shallow dive(6M) in Lady Bay with various crabs and small fish hiding in the seagrass. Lots of choices. Bring your camera.

Sun 24

Port Noarlunga Jetty

Tide times — [L] 0137 **0.47** [H] 0729 **2.16** [L] 1334 **0.34** [H]

Reputed to be the most-dived site in Australia, Pt. Noarlunga jetty's access to the reef is a dive to 9M at high tide. Entry is from the middle steps and the exit is easier at high tide. You'll see large numbers of sweep, zebra fish, and moonlighters. Depending on the direction of the current, follow the reef south to find the marked trail or head north to see huge silver drummer. Take a torch to look in holes and under ledges to find colourful sponges. Rays, blue devils and cowry have been seen on the reef. The former end ladder which is now on the bottom will be a haven for fish. Remember, this is a marine reserve so nothing can be taken. A trolley can be useful.

► Congratulations

Welcome to our Newest Member

IAN PHILP

We hope that you will have
a long and enjoyable stay with the UEC

HAPPY DIVING & HAPPY FRIENDSHIPS



HARRY: "FIND YOUR INNER EXPLORER"



November 27 – 2018

Dr. Richard (Harry) Harris is *South Australian of the Year*.

Harry has vowed to "inspire the next generation of explorers". He wants kids to get out and about and take a few risks but in a carefully managed way. Harry has a passion for the great outdoors and wants to encourage young South Australians to find their sense of adventure. He says he had an amazing childhood and enjoyed summer holidays at Coffin Bay and Kangaroo Island.

He thinks of what he can do with the honour bestowed on him. He wants to be a mentor for kids doing the things he loves, as he enjoys the work he does with kids as a doctor. So he is looking to do some work with Operation Flinders and the Kids' Foundation. He wants to work with schools and try and fire young people up....."to get them out to find their inner explorer".

(The Advertiser)

January 26 – 2019

Australian of the Year

Harry, along with his diving mate, West Australian Dr. Craig Challen, have been named joint Australians of the Year for their efforts in the rescue of the boys soccer team from the flooded underground cave in Thailand. They were recognised for their courageous work, selflessness, and willingness to help others, qualities that epitomise the Australian spirit. Very worthy recipients!

Harry re-iterated his belief that kids should be more active, to get out and explore.

The Underwater Explorers Club of SA is proud of our former member and dive buddy.

Congratulations and well done.



► *Safety Officer*

Tidal Currents

As divers we are concerned about currents. They can make for an unpleasant dive, but if we know when they occur and how to deal with them we can have a safe, enjoyable dive.

Divers encounter currents near shore and these are determined by the rise and fall of the tides. They can also be influenced by land features which extend out from the shoreline, e.g. the 'point' at Second Valley. Sometimes there is strong movement when water is forced through a narrow area; you'll often feel a strong current at Port Noarlunga moving across the jetty north or south.

Currents can also be very strong offshore, and here in the Gulf we have some examples; the ex-HMAS Hobart site for one, as well as further south: the Clan Ranald out from Edithburgh and sites around the Althorp Islands.

Tides here in South Australia usually see a change of between one and two metres between high and low tide but sometimes slightly more. When there is a big tide change the current is usually stronger. So be sure to check the tide times before you go for a dive. Use the Bureau of Meteorology website: www.bom.gov.au. Tide tables are there for various SA locations. Choose the closest one to your planned dive site.

Sometimes you'll experience a 'surge' of water on the bottom, like a 'washboard' effect, or strong movement back and forth. This is not a current. It is the action of waves usually in shallow water. There can be upswelling as well, so be wary of shallow waters around rocks and ledges. Stay near the bottom.

There are two high and two low tides per day unless there is a 'dodge' tide where there is no water movement. Large tide changes are found at the full moon. If you are determined to dive when there is a big tide change do it on the change of tide or within half an hour of the high or low point so there is little water movement.

Divers who plan their dive well and are aware of tide change should be able to handle changes close to shore or at jetty sites. Always begin the dive by swimming into the current so you are coming back with it, an easier swim when you are lower on air or are tired. If you feel a strong current, try to be streamlined, stay near the bottom, and swim with your head lower than your feet. If you tire, stop on the bottom, deflate your BCD, hold onto something (a rock or a pylon), rest, and then continue on when rested.

Some other things to think about: Stay close to your buddy at all times. Have a look-out on your boat so help is at hand if a diver drifts away. Be vigilant with navigation so your exit point is at or before your entry point.

Local knowledge of dive sites is important. If you are diving a new site, ask other divers about the conditions with currents. You will have an enjoyable dive if well-prepared.

Safe Diving

Sue

► *Past Dives*

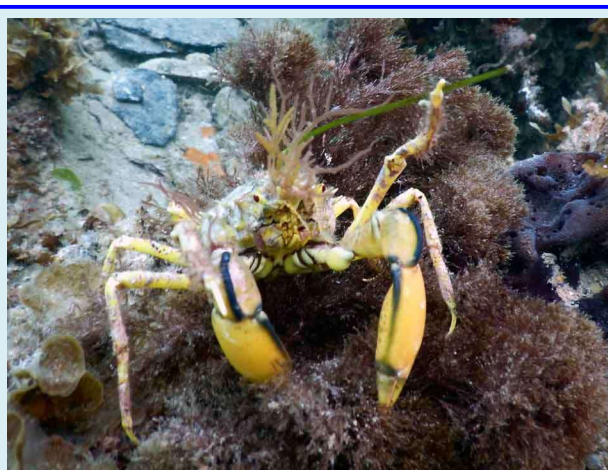
Rapid Bay — 9 December

Mary, Jeanette, Ian and I dived into the milky waters of Rapid Bay with the sole purpose of not losing anyone. This turned into a great dive as we encountered a few surprises and met up with a number of locals.

The territorial male Scaly Fins (*Parma victoriae*) had moved onto their favourite breeding platform, patrolling the area keeping rivals away (and attacking any diver that ventured too near) while they patiently waited the arrival of this seasons mate. To our surprise we saw a couple of **Southern Blue Devils** one was not sheltered under any overhanging rock and enabled the photographers a clear shot. Perched nearby was a **Decorator Crab** showing off its algae growth growing from the top of its head. Completing a memorable dive was a small black **Frogfish** that was found under a rock along with a brittle star. The Rapid Bay Jetty continues to enthrall divers with its everchanging diversity and its regular inhabitants.



Keith Lockwood



Photography by Keith Lockwood

Edithburgh — 26 January

After a great morning dive with Sue Cucchiarelli, Helen and I jumped in at Edithburgh Jetty again, covering the left side a bit more thoroughly this time. We saw a seahorse, several nudibranchs (especially numerous were the *Oxynoe viridis* including tiny ones) a sea hare and no less than 4 anglerfish! In addition there was a blue ringed octopus and a boarfish.

We did spot other UEC members who had started their dive a bit after us when we were at the end of the jetty, some were particularly recognisable (eg. the blue fish...Bob Butterfield!).

All in all a very enjoyable dive lasting 2 hours and 35 minutes reaching a depth of 7.3m. The water was a comfortable 21°C and although windy in the afternoon, it was coming off shore so did not affect conditions.

Thank you to all for a lovely weekend.

Marianne



Photography by Marianne Chi

PHOTOGRAPHIC COMPETITION

Display your skills and submit 3 photographs for consideration in our on-going competition which runs tri-monthly

New themes have been decided for future competitions –

The current theme is * **Macro Shots**

To be followed by * **Black and white subjects**

Photographs should be 7" x 5" which is **2100 x 1500** pixels when resolution is **300** pixels/in

File should be **jpeg**, with a size less than **400 Kb**

Forward to secretary@uecofsa.org.au by **15-February-2019**



Seafood Sensation

Green curry seafood pilaf

INGREDIENTS

- 2 tbs olive oil
- 2 garlic cloves, crushed
- 4 spring onions, thinly sliced
- 2 tbs green curry paste
- 1 cup (200g) brown rice
- 400ml light coconut milk
- 1 cup (250ml) chicken or fish stock
- 500g seafood marinara mix
- 250g pkt Zucchini Noodles
- 1/4 cup chopped mint
- 2 tbs chopped coriander

INSTRUCTIONS

- Heat the oil in a large non-stick heavy-based saucepan over medium heat. Add the garlic and spring onion and cook, stirring, for 1-2 mins or until the spring onion softens. Add the curry paste and cook, stirring, for 30 secs or until aromatic.
- Add the rice and cook, stirring, for 1 min. Add the coconut milk and stock and stir to combine. Season. Bring to the boil. Reduce heat to low. Cover and cook for 20-25 mins or until the rice is just tender and the liquid is reduced.
- Add the seafood and zucchini. Cook, covered, for 5 mins or until the seafood is cooked through. Add the mint and coriander and stir to combine. Divide among serving bowls.

Did you know? —

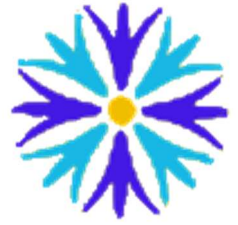
The frogfish swims by jet propulsion. It uses backward-facing, tube-like gill openings that propel it along rather than using a tail like most fishes.



All of these handsome critters are members of the species.



CALENDAR



📅 All Sunday dives to be booked **on the Website**
by the **Thursday** before the dive 📅

(Dive **departure** times as shown)

FEBRUARY

DL – Robyn Butterfield (0419 866 460)

SO – Mary Hood (0427 716 938)

➤	Wed 6th	South Australia Police Water Operations Unit visit.	1930
📅	Fri 15th > Sun 17th	WE Normanville - Hobart Worrina	
➤	Tues 19th	Committee Meeting	1000
➤	Fri 22nd	Newsletter items due	
📅	Sun 24th	Port Noarlunga Jetty	0830
➤	Wed 27th	SDF Meeting — Rob Roy Hotel	1900

MARCH

DL – Jeanette Smith (0436 007 459)

SO – Bob Butterfield (0417 838 387)

➤	Wed 6th	General Meeting — Nailsworth CC, 31 Delanger Ave. Collinswood	2000
📅	Sun 17th	Bluff – Victor Harbor	1000
➤	Tues 19th	Committee Meeting	1000
➤	Fri 22nd	Newsletter items due	
➤	Wed 27th	SDF Meeting — Rob Roy Hotel	1900
📅	Sun 31st	Aldinga Reef O'Sullivan's Beach	0830

APRIL

DL – TBA

SO – TBA

➤	Wed 3rd	General Meeting — Nailsworth CC, 31 Delanger Ave. Collinswood	2000
📅	Sun 14th	Ex HMAS Hobart Worrina	1000
➤	Tues 16th	Committee Meeting	1000
➤	Fri 19th	Newsletter items due	
📅	Thu 18th > Thu 25th	Easter Anzac Week- Edithburgh	
➤	Wed 24th	SDF Meeting — Rob Roy Hotel	1900

ITEMS FOR THE NEWSLETTER ARE ALWAYS WELCOME

Send them **by the date shown** in the calendar to —

Peter Mansfield, 4 Delange Avenue, Banksia Park SA 5091 or email to petermsf1@bigpond.com

